


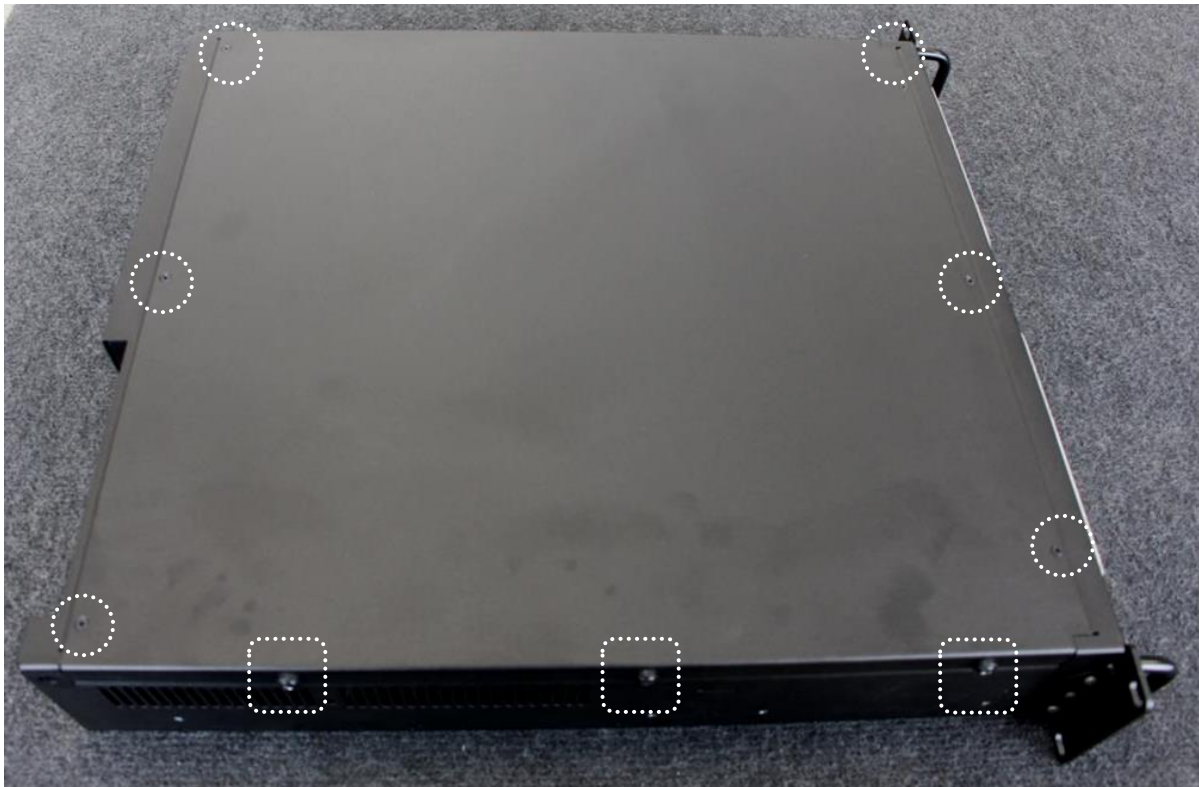
## Avolites LTD Engineering Change Notice

ECN title	Q3 server – R2-VIDEO board link mod		
ECN Number	ECN-212		
Related Product(s)	All Q3 servers before Q3-00045		
Date / Author	01/11/2018	Grzegorz Ksiązka	
Reasons for ECN	DP output not able to drive active converters		
Parts required	Resettable fuse 500mA, 1A 60V PN 10-02-0052 30AWG mylar covered solid core wire PN 04-03-0062		
Tools required	Solder iron station, side cutters, silicon gun		
Estimated time	15 Minutes		

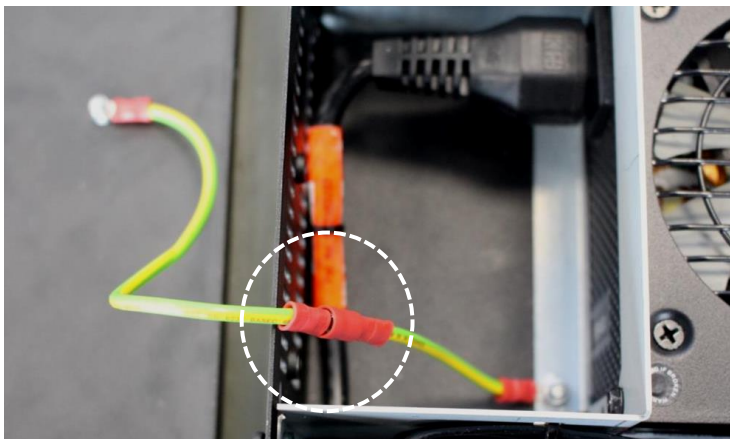
### 1. Server opening

Unscrew lid fixings: 6x SCREW M3 X 6 CSK SUPA BLACK (circle) and 6x SCREW M4X8 PAN SUPA BLACK with WASHER M4 FINISH BLACK NYLON (square; 3x on each side)

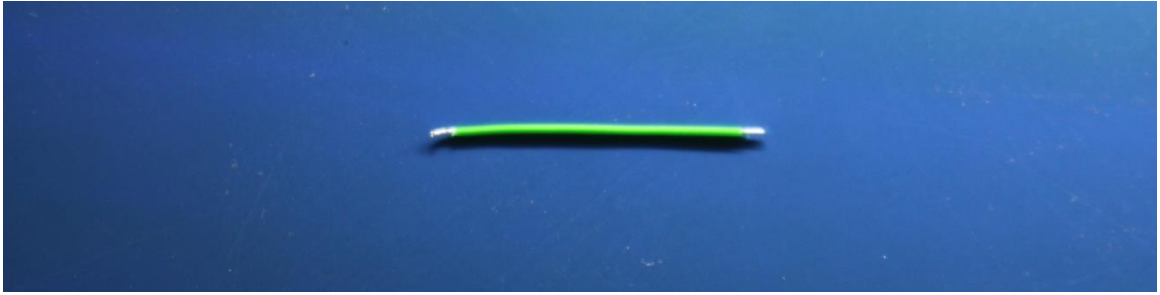
Retain the fixings



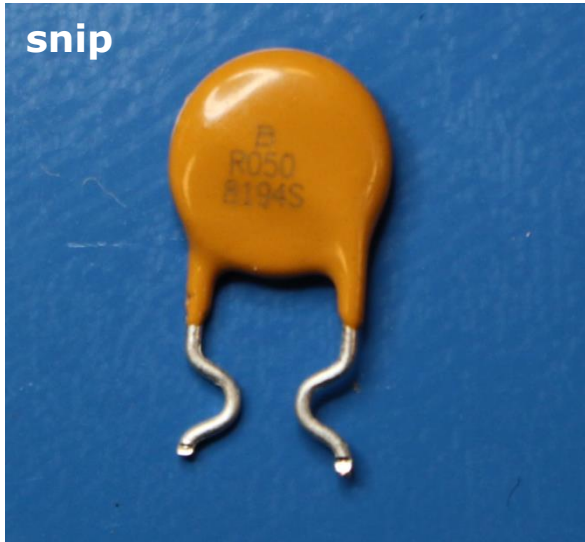
Take the lid off and unplug lid earth wire



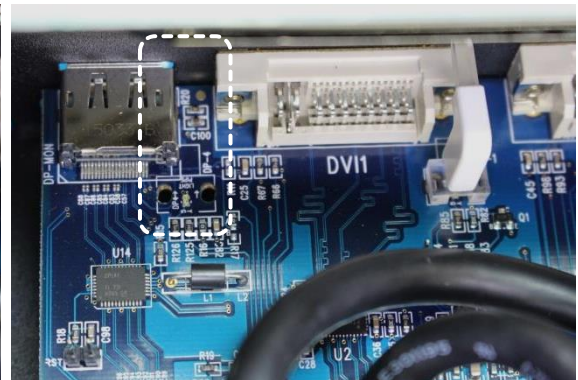
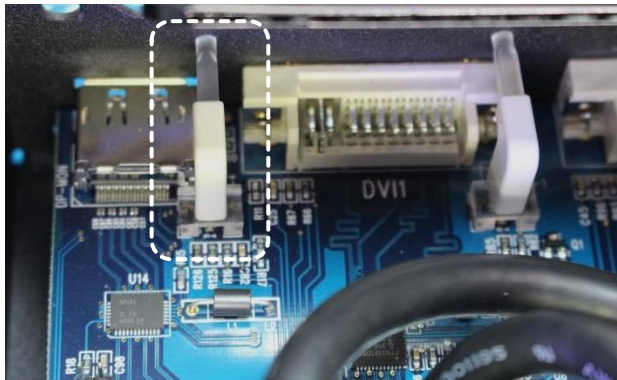
- Cut 20mm off 30Awg mylar covered solid core wire  
Strip off 1mm insulation on both ends



- Snip of the legs of the resettable fuse 500mA, 1A 60V and bend them out to the shape shown below

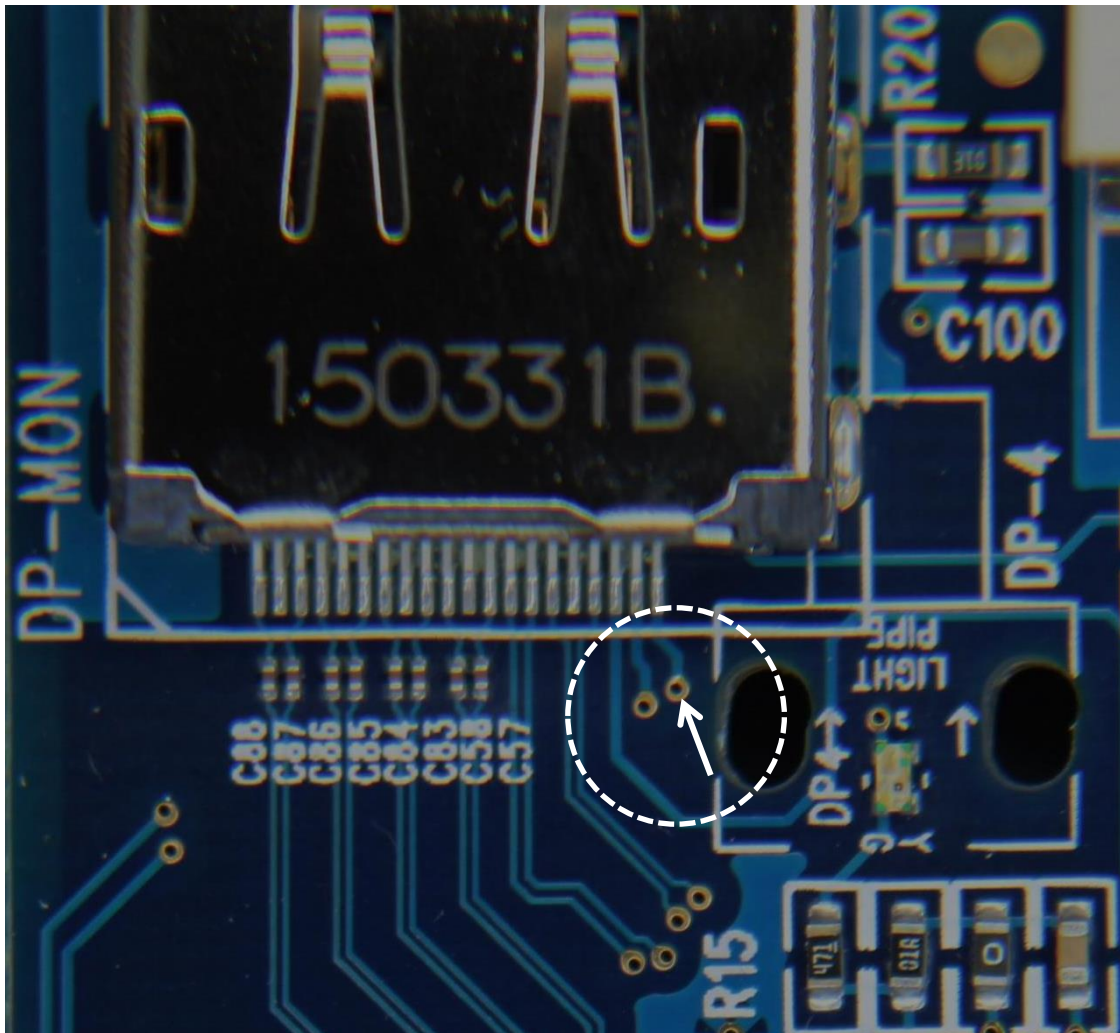


- Remove the LED light guide, for the DP output

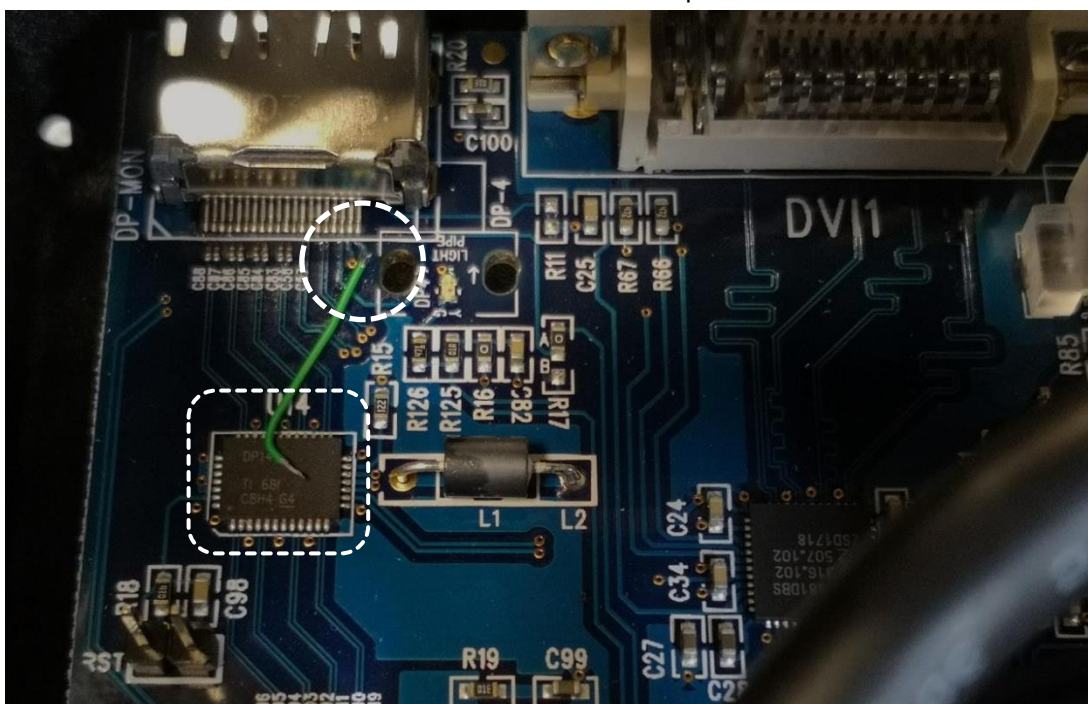




5. Locate the right most Via behind the DP output (arrow)

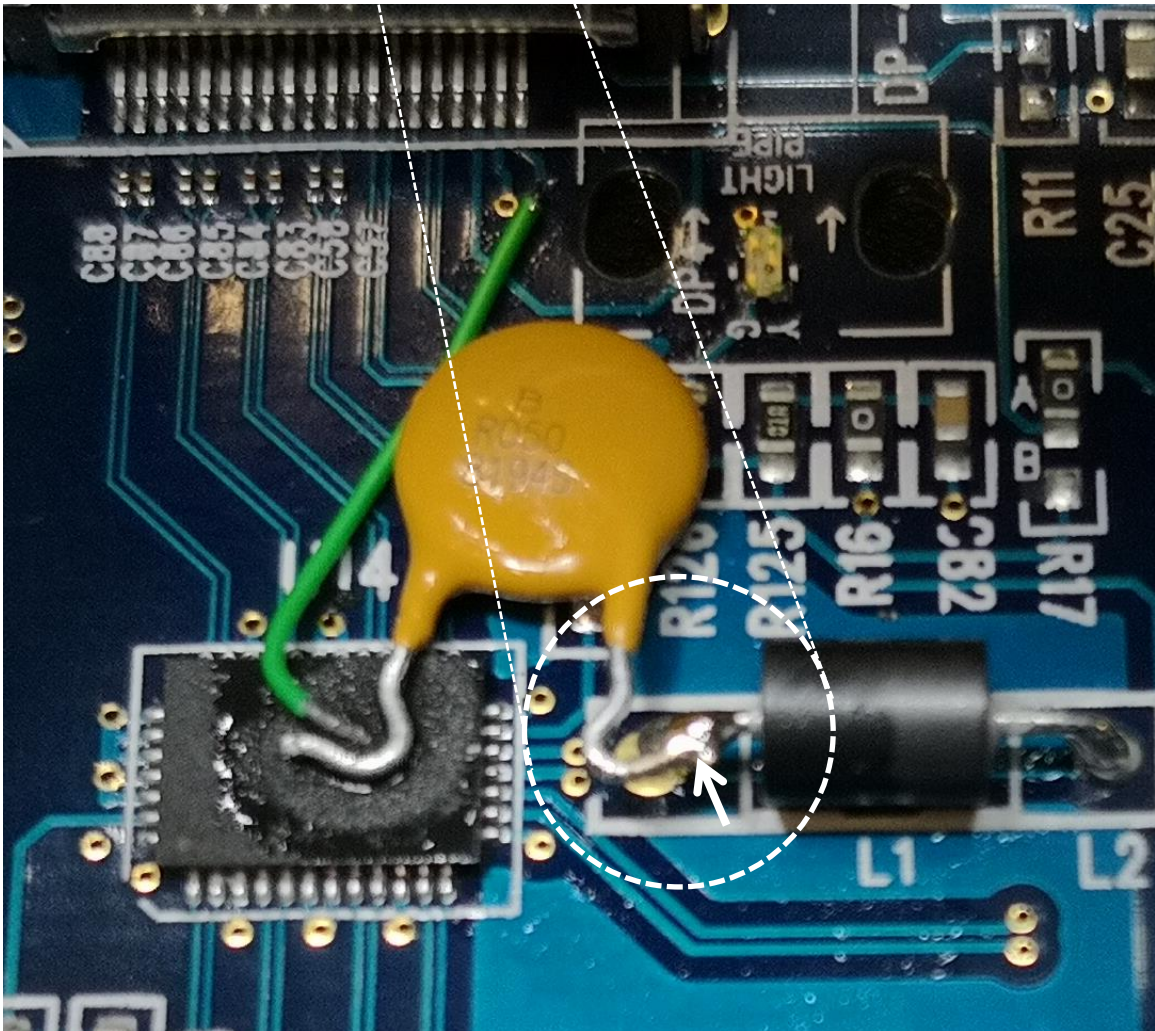
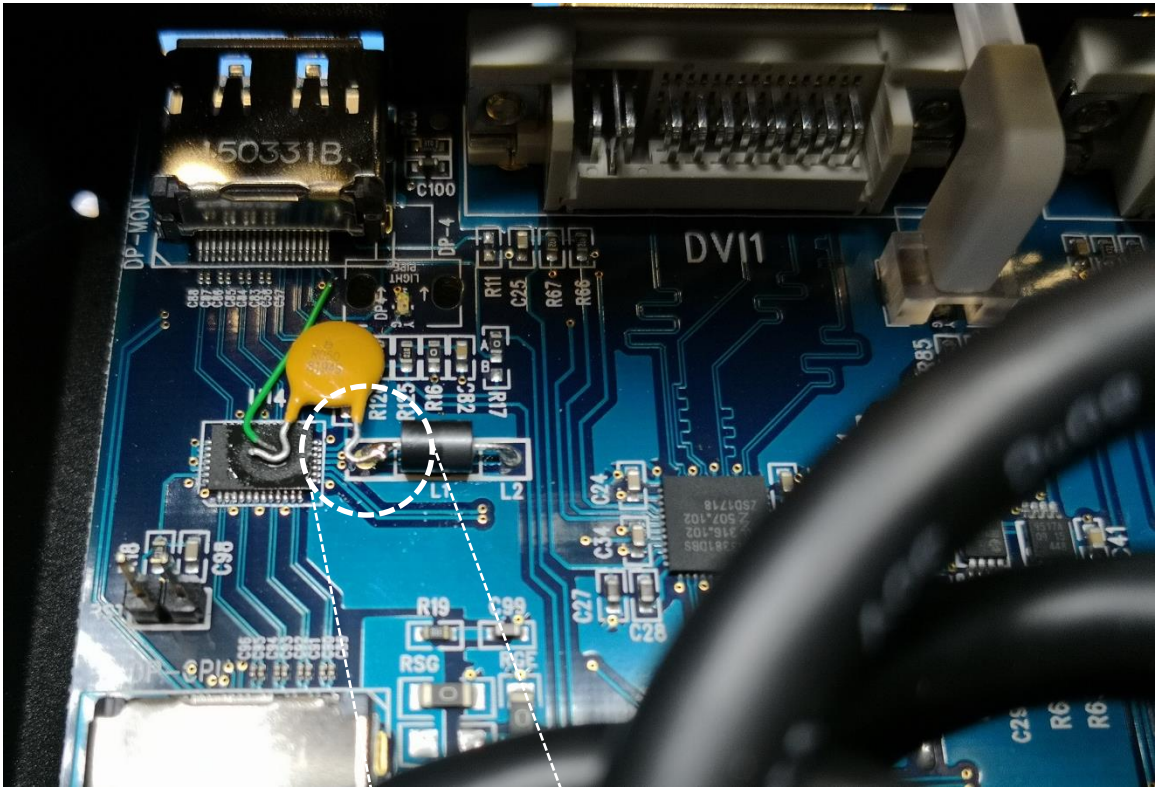


6. Insert the prepared 30 AWG wire and solder  
MAKE SURE TO HAVE THE SOLDERING IRON AWAY FROM THE OTHER VIA...  
Place the other link end on the dead centre of the U14 chip



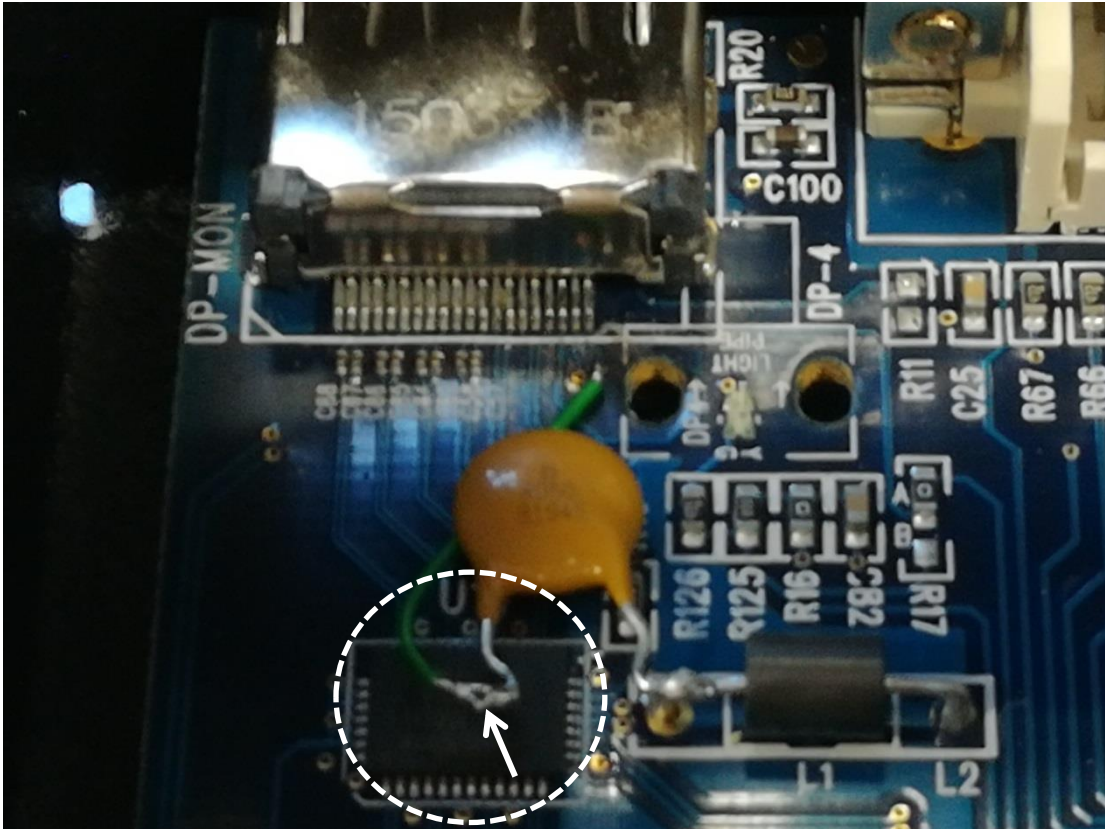


7. Solder the prepared resettable fuse to L1 nearest to the IC

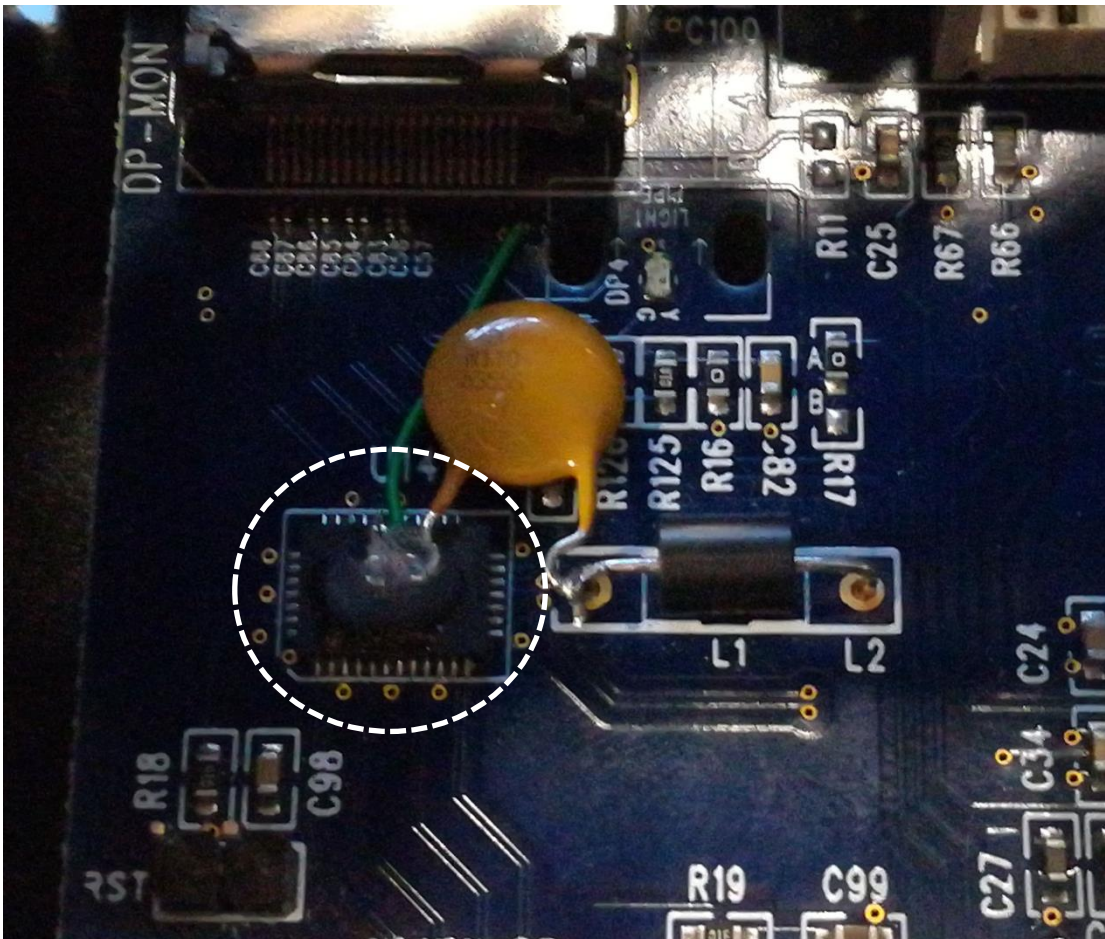




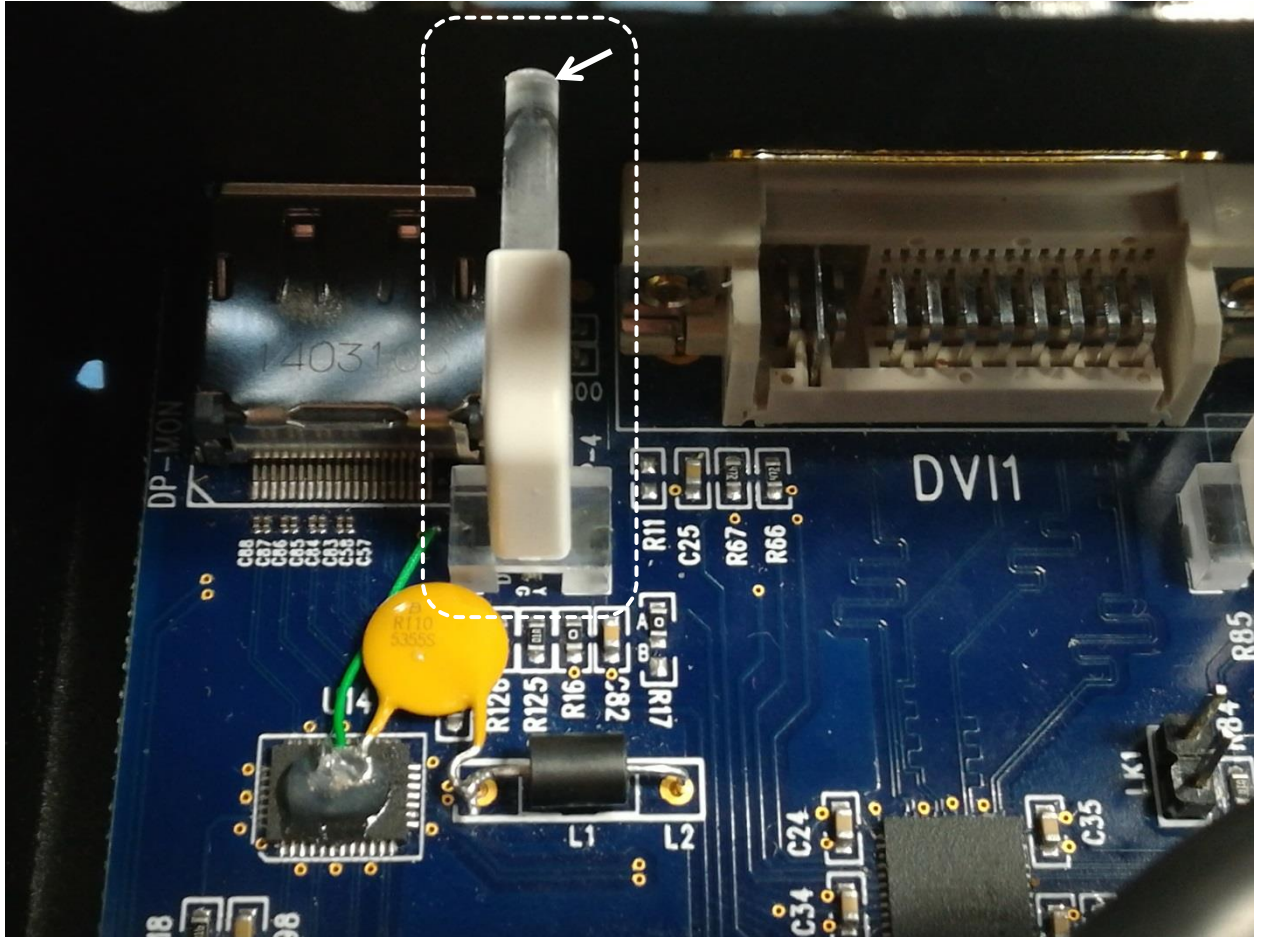
8. Solder the wire to the other side of the resettable fuse, and make sure it lays flat on the IC



9. Apply a bit of silicon to the assembly, NOT covering the pins



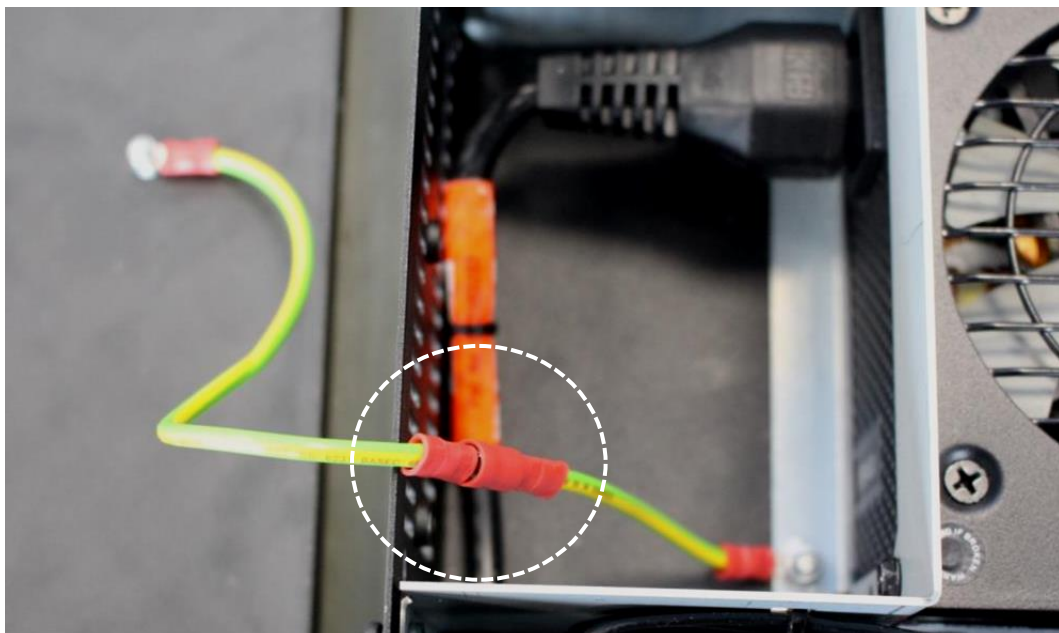
10. Replace the Led light pipe  
Ensure the light pipe is in the back panel hole (arrow)



11. Test unit with Active DP-HDMI converter

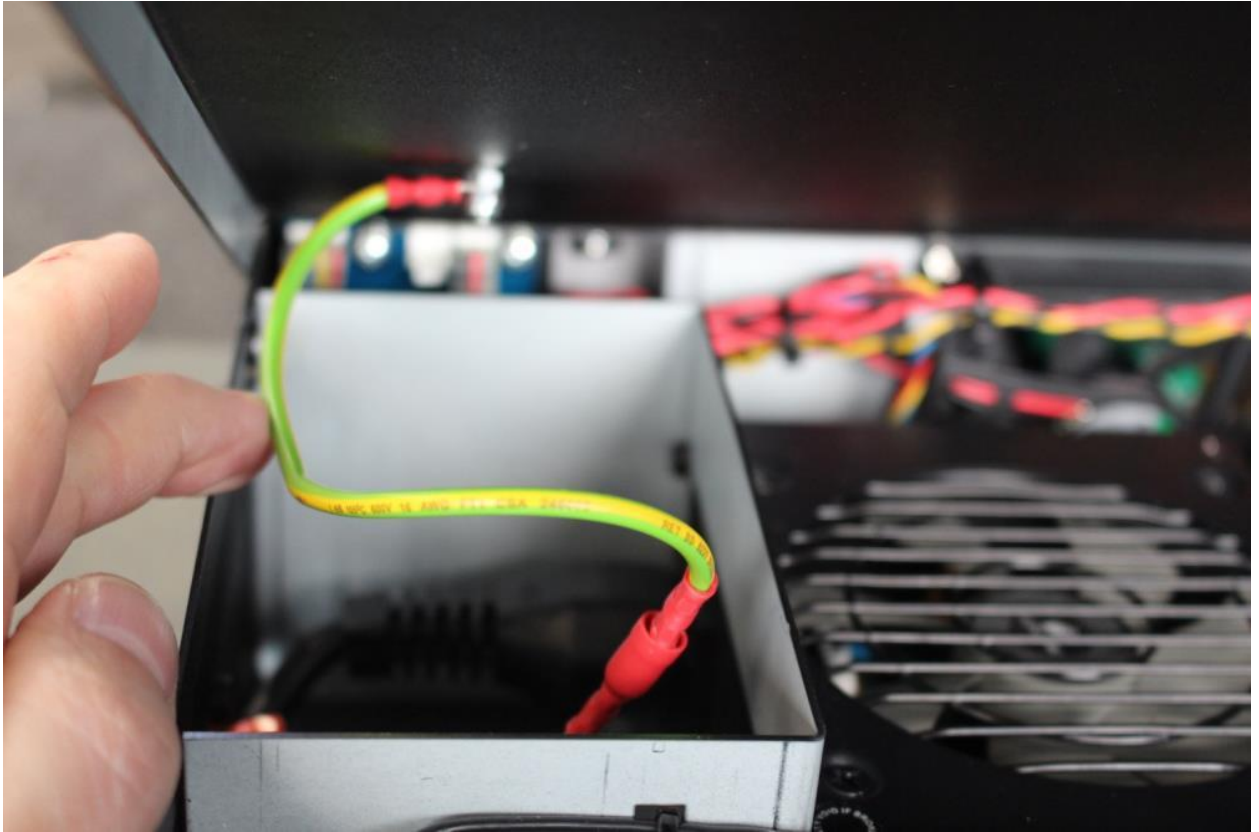
12. Server closing

Place the lid next to the shell and connect Earth looms back.





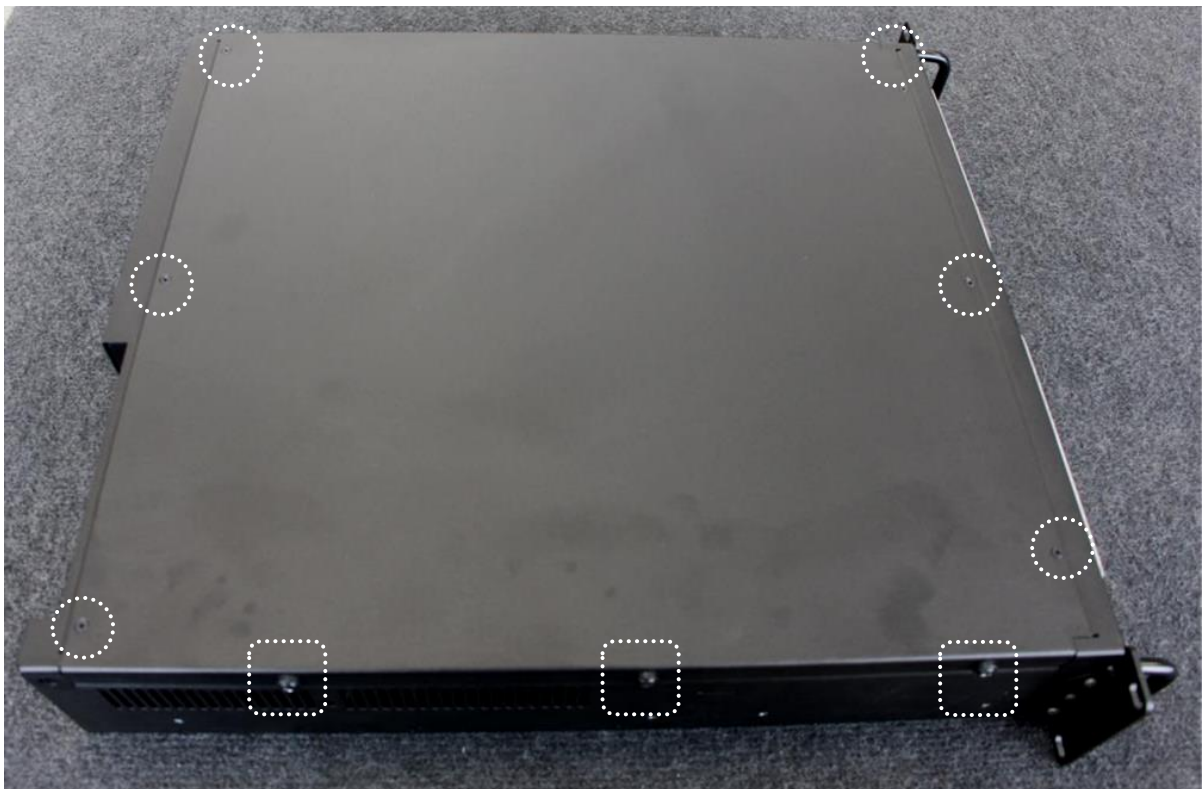
Fit the lid onto the shell then push the earth lid inside the Vent Channel and lower the lid  
NOTE: Ensure the earth loom is NOT trapped between the lid and Vent Channel



Fix the using the previously removed fixings

6x SCREW M3 X 6 CSK SUPA BLACK (0210-2064B); circle

6x SCREW M4X8 PAN SUPA BLACK (0210-4082B) with WASHER M4 FINISH BLACK NYLON (0214-1450), square (3x on each side)



This concludes the ECN.